



Sheringham Shoal Extension Project and Dudgeon Extension Project

Phase One Consultation Summary Report

November 2020

Introduction

Equinor is bringing forward proposals to extend the existing Sheringham Shoal and Dudgeon offshore wind farms located off the North Norfolk Coast.

In July and August 2020, we held our phase one community consultation, and invited comments on our early stage proposals.

Thank you to everyone who participated in our consultation. The feedback we received has helped to improve our understanding of the local area, including any specific considerations or concerns.

This Consultation Summary Report provides an overview of the feedback we received during our consultation and what we are doing in response to this feedback. We will also explain the opportunities for you and your community to engage with the project moving forward.

Sheringham Shoal Extension Project and Dudgeon Extension Project

The proposed Sheringham Shoal Extension Project (SEP) and Dudgeon Extension Project (DEP) (known as the 'Extension Projects') will have the potential to generate a combined 719 megawatts (MW) of renewable power, capable of powering 820,000 UK homes.

We are seeking to minimise potential impacts on the community and the environment by adopting a shared onshore footprint for the Extension Projects. This means that we will apply for a joint Development Consent Order (DCO) application, which will be determined by the Secretary of State for Business, Energy and Industrial Strategy (BEIS).

About Equinor

Equinor is the UK's largest energy supplier and we are committed to investing in projects that secure reliable energy for years to come. As a broad energy company leading the way in decarbonisation, we are a key contributor to the UK's efforts to meet its net zero carbon target.

Headquartered in Norway, we are one of the world's largest offshore wind developers. We power over one million homes across Europe with renewable energy from our existing offshore wind farms in the UK and Germany.

Our current UK offshore wind farms provide enough renewable electricity to power over 750,000 UK homes. We are proud to utilise local skills and suppliers and support local projects through our community funds.

We have extensive experience developing, building, and operating offshore wind farms in the UK, and we are pioneering floating offshore wind technology.



Our phase one consultation

Our phase one community consultation was held in July and August 2020.

We publicised our consultation locally and online by:



Holding a virtual exhibition to display all the information on the Extension Projects. You can still visit our virtual exhibition at event.sepanddep.co.uk



Distributing our community consultation leaflet to over 11,400 local residents and businesses within our core consultation area.



Placing advertisements in a number of local newspapers, including: North Norfolk News, Eastern Daily Press, Dereham & Fakenham Times, Norwich Evening News and Diss Mercury.



Engaging with your parish, district, and county councillors across the consultation area.



Displaying posters at local information points across our consultation area, such as at grocery shops, post offices and libraries.



Advertising our consultation across Equinor UK's Twitter and Facebook accounts, including targeted localised campaigns.



Displaying information and requesting feedback on the Extension Projects via our digital feedback platform. This can be viewed at sepanddep.commonplace.is

We welcomed over 1,700 visitors to our virtual exhibition.

During our phase one consultation we received almost **300 pieces of feedback**.

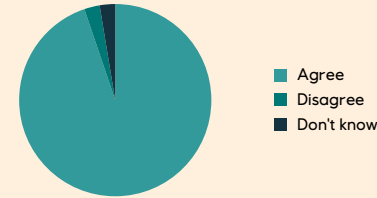
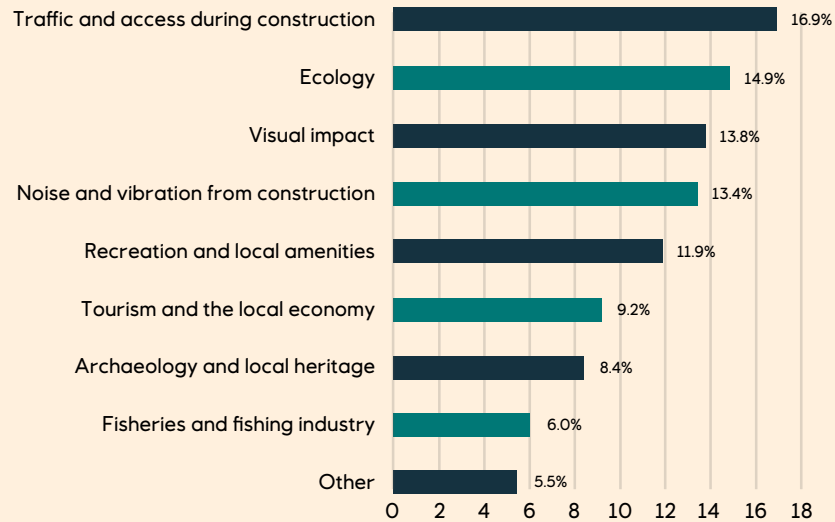


Your feedback

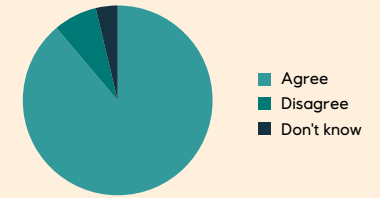
Our phase one community consultation provided an opportunity for people to view and comment on our early stage proposals.

The feedback we have received as part of this consultation has helped to improve our understanding of the local area and the aspects of the Extension Projects that are important for us to consider as we refine our proposals.

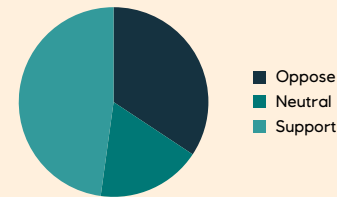
Aspects important to the local community



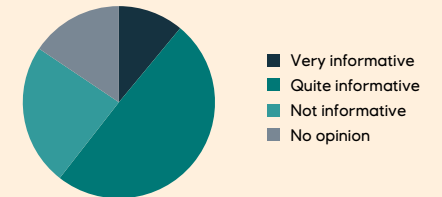
95% of respondents agreed that climate change is an issue which should be addressed.



89% of respondents agreed that the UK needs to generate more energy from renewable sources, including offshore wind generation.



48% of respondents either supported or strongly supported the Extension Projects. **34%** either did not support or strongly opposed the Extension Projects, and **18%** provided a neutral view.



61% of respondents found our virtual exhibition or consultation materials very informative or quite informative.

How we've listened

There were a number of key themes which emerged from the feedback we received. These are listed below with information on what we are doing in response.

Theme	Your comments	What we are doing
Traffic and access during construction	<p>Across the consultation area people expressed concerns about disruption, caused by construction traffic and access, to the narrow road network in Norfolk.</p> <p>Key roads included Mangreen Lane and Hickling Lane near Swardeston, Chapel Street in Cawston, and the A148 near Bodham. Beach Lane in Weybourne was also of concern.</p>	<p>We understand that traffic and access during the construction of the Extension Projects is one of the most important local issues. We are working with Norfolk County Council and Highways England to establish a construction traffic routing strategy which will be submitted as part of the DCO application.</p> <p>An important consideration for this will be the avoidance of single carriageway roads where possible, and routing of construction traffic away from villages and properties.</p> <p>As part of our DCO application we will also be producing a draft Construction Traffic Management Plan, which will be informed by baseline traffic information and include an anticipated number of Heavy Goods Vehicles (HGV) movements as part of the onshore works. We are currently gathering baseline traffic flow and road safety data to inform our assessment work. At our phase two consultation we will be presenting this assessment of potential impacts on driver delay, pedestrian and cycle amenity, pedestrian and cycle delay, and road safety – as well as outlining proposals for mitigation measures.</p>

Theme	Your comments	What we are doing
Ecology and nature conservation	<p>People expressed concerns regarding the potential impacts of the proposals on wildlife, both onshore and offshore. Respondents also highlighted a number of Sites of Special Scientific Interest (SSSIs) that should be avoided, such as Swannington Upgate Common and Alderford Common near Swannington.</p> <p>Residents also highlighted a number of important species, such as bats, badgers, great crested newts, along with migrating birds along the coast.</p>	<p>As we refine our proposals it is important to us that we avoid or minimise any ecological impacts. A range of ecological surveys are currently underway to collect data about the habitats and species within the onshore and offshore study areas. This data is being used to further develop the layout and engineering design of the Extension Projects. For example, we have routed our onshore cable corridor to avoid important habitat areas, such as woodland and ponds, while investigating sensitive cable installation methods where habitats cannot be avoided.</p> <p>Available results of the ecological surveys will be shared in the Preliminary Environmental Information Report (PEIR) at phase two of our community consultation.</p> <p>The PEIR will include an assessment of impacts to ecology, including how we plan to avoid, reduce, and mitigate any impacts.</p> <p>In addition, we are also collecting data on the condition of habitats within the onshore study area to help us identify where biodiversity can be improved. We will present areas which can be improved for biodiversity in our final DCO application.</p>

Theme	Your comments	What we are doing
Visual impact	<p>A number of people were concerned about the potential visual impact of the onshore substation, especially from the Tas Valley.</p> <p>People were also concerned about how visible the turbines would be from shore, especially given the proximity of the existing wind farms.</p>	<p>We are taking careful consideration of how we can minimise and mitigate visual impact. At our phase two consultation, planned for spring 2021, we will be seeking feedback on a preliminary visual impact assessment of each substation option from surrounding viewpoints agreed with the relevant local planning authorities.</p> <p>The findings of the visual impact assessment, and feedback from our phase two consultation, will help us to identify which of the substation area options will be taken forward for the DCO application.</p> <p>At our phase two consultation we will be able to show imagery of what the design of our onshore substation could look like.</p> <p>We will also be assessing the visual impact of the offshore wind turbines for the Extension Projects, from a range of sites along the North Norfolk coast.</p>

Theme	Your comments	What we are doing
Noise and vibration from construction	<p>Noise and vibration from construction was also highlighted by respondents as a key concern.</p> <p>Most frequently, respondents questioned what noise will be associated with construction, how long this would last for, and what hours construction would be taking place.</p>	<p>Understanding the noise and vibration associated with construction will be important, and a noise and vibration impact assessment will be included within the PEIR. This will provide details of the noise and vibration levels associated with construction and any management measures required to control and limit noise and vibration.</p> <p>This assessment will also include information regarding normal hours of working and permissible noise levels. These noise levels would be agreed with the Environmental Health Officers from each District Council and set out within the application documents.</p> <p>These measures will then be secured through the DCO and will be a requirement for all contractors working on the Extension Projects.</p>

Theme	Your comments	What we are doing
Public Rights of Way	Local residents highlighted the importance they place on the Public Rights of Way (PRoWs) across the area, including the Coastal Path.	<p>We understand the importance of PRoWs to the community and we will be taking into consideration how the Extension Projects interact with PRoWs, such as footpaths, cycle routes and bridleways. This will be done as part of the Environmental Impact Assessment (EIA) process.</p> <p>We will be creating a strategy for how PRoWs will be managed as part of our DCO application, which will be agreed with Norfolk County Council who are responsible for all PRoWs and National Trails in Norfolk.</p> <p>We will carefully consider how to maintain safe access along PRoWs for members of the public through management and/or the use of short-term temporary closures and diversions where necessary. At our phase two consultation we will present an assessment of impacts on PRoWs as well as our mitigation proposals.</p>

Theme	Your comments	What we are doing
Historic environment and local archaeology	Residents highlighted the importance of local archaeological sites, such as Caistor St Edmund, Kett's Oak near Hethersett and a number of World War II sites.	<p>We have avoided direct impacts to designated heritage assets such as Listed Buildings and Scheduled Monuments as part of our site selection process.</p> <p>Surveys are currently ongoing to investigate the archaeological potential within the onshore study area. This will inform further decisions about the site selection process.</p> <p>We will also consider indirect impacts to heritage assets in the PEIR that will be published at our phase two community consultation.</p>
Cumulative impacts	People also raised concerns about the cumulative impacts of other projects in the region, such as other energy projects, the Norwich Western Link and A47 dualling.	<p>We understand that there have been multiple developments in the area and are working hard to avoid and minimise any potential cumulative impacts with other proposed developments. This will form a key part of the EIA and we have been studying all of the information available so that we can understand potential interactions with other projects.</p> <p>As part of our commitment to reduce impacts on local communities from multiple projects, we decided to take a joined-up approach and bring together two separately owned offshore wind farm extensions into a shared onshore footprint as one single DCO application.</p>

Theme	Your comments	What we are doing
Offshore coordination project	A number of local residents noted that the North Norfolk area has been subject to multiple windfarm developments and questioned whether an offshore ring main could be used as an alternative.	<p>We understand that there are a number of windfarm projects planned in the local area and as part of our commitment to reduce impacts on local communities, we decided to take a strategic approach and bring together two separately owned offshore wind farm extensions into one single DCO application. It is our intention to install both cables within a shared onshore footprint, to minimise disruption.</p> <p>We are also actively engaging with the Government's Offshore Transmission Network Review and are fully supportive of efforts for greater coordination in the offshore wind sector. We continue to use our position and experience to promote this idea with the Government and are working closely with trade body Renewable UK to feed into the Government's review. In the absence of a legislative proposal to support a coordinated approach, it is not possible for us to integrate that option with the Extension Projects.</p>

All comments received to this consultation will be responded to in our Consultation Report, which will be submitted as part of our DCO application.

What's next?

Over the coming months, we will be developing our proposals for the Extension Projects based on feedback received during our phase one consultation.

We plan to hold our second phase of community consultation in spring 2021, where we hope to hold face-to-face consultation events and present our latest proposals in person. Face-to-face events will be dependent on COVID-19 and UK government advice and restrictions on public gatherings.

In the meantime, we will be continuing engagement with all stakeholders, including parish, district and county councillors. We will be setting up locally specific stakeholder forums to focus on key aspects of the proposals for the Extension Projects. We will also ensure to keep you updated with latest plans via regular community newsletters.

Stay informed

You can sign up to receive project news via our digital engagement platform (sepanndep.commonplace.is/news) or communications channels, as listed on the back of this leaflet.

Viewing our materials

All information regarding the Extensions Projects is available to view on our website (sepanndep.commonplace.is). This includes our interactive map where you can view areas of interest in more detail, and PDF maps which can be downloaded.

All of our consultation documents will be available to view and download from our consultation website. Alternative methods of receiving documents can also be arranged at no extra cost for those without computer or internet access.

Refining our proposals

This feedback we received has helped us to refine our proposals and shape the design of the Extension Projects.

Landfall location

We will be using your phase one consultation feedback, alongside our constraints screening and technical and environmental surveys, to identify an initial 200 metre landfall location for the Extension Projects. During our phase two consultation we will ask for your feedback on this proposed landfall location.

Onshore cable corridor

We will be using your phase one consultation feedback, alongside our constraints screening and technical and environmental surveys, to refine our more focussed 'study area' to a 200 metre wide cable corridor. We will ask for your feedback on this 200 metre wide cable corridor during our phase two consultation.

Onshore substation search area

Following your phase one consultation feedback, as well as results from our environmental and other technical surveys, we have selected two options for the location of the onshore substation area, both within proximity to the existing Norwich Main Substation. One option was presented as field 1 at our consultation and the other is a combination of field 2 and 4.



To view a more detailed map, please visit: sepandepmap.commonplace.is. This map will be updated and made available during our phase two consultation.

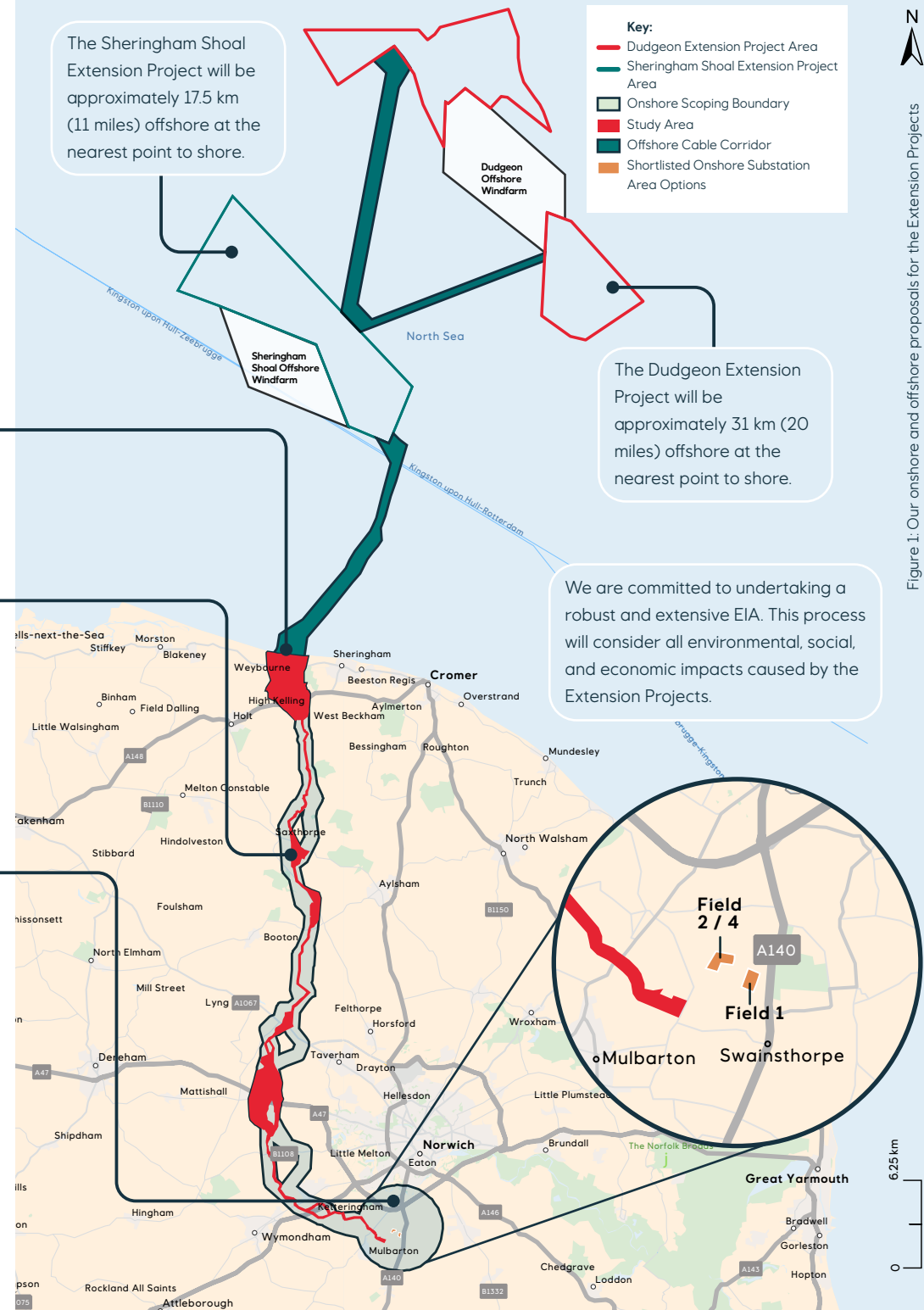
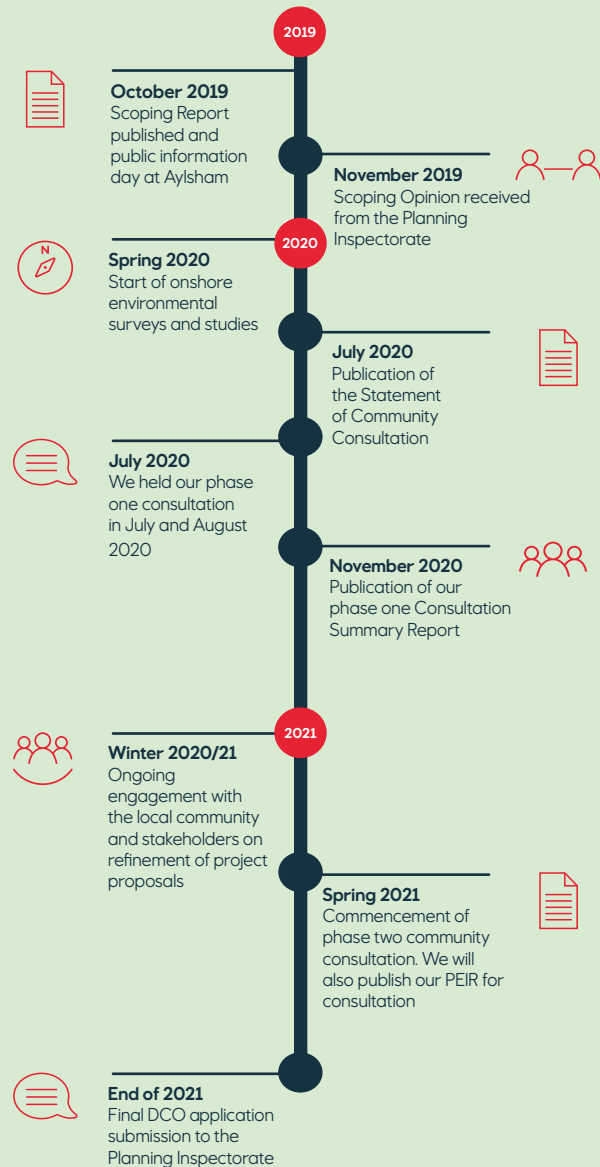


Figure 1: Our onshore and offshore proposals for the Extension Projects

Consultation timeline




Community Liaison Officer

All our communication channels overleaf remain open for you to get in touch and ask any questions. You can also contact our Community Liaison Officer (CLO), Nigel Tompkins, who is based locally and available to answer any questions about the Extension Projects.

Should you wish to speak to Nigel or meet with him, please contact him using the details below:

 **Email:** nigel@ni4b.co.uk


 **Telephone:** 01263 822427 or 07860 206565

Landowner interests

If you are a landowner, have an interest in any of the land which interacts with our proposals, or if you have any questions relating to land interests in the area, please contact the Dudgeon and Sheringham Extension Projects Land Team at Dalcour Maclaren by:

 **Calling:** 01869 352725

 **Emailing:** equinor.ukextensions@dalcourmaclaren.com

 **Alternatively, you can write to Simon Hinchliffe or Rhiannon Price at:**
Dalcour Maclaren, 1 Staplehurst Farm, Weston on the Green,
Oxfordshire, OX25 3QU

Contact us

You can get in touch with our community relations team at any time by any of the methods below:



Send us an email: info@sepanddep.co.uk



Call our Freephone information line: 08081 963 673



Visit our website: sepanddep.commonplace.is



Send us a letter: FREEPOST DUDGEON AND SHERINGHAM EXT

Should you require this document in large print, audio or braille then please contact us using the details provided.

When responding to our pre-application consultation your personal data will be stored in compliance with GDPR by Equinor and will not be shared with third parties. Your details may however be passed on to the Planning Inspectorate to ensure that our pre-application consultation is sufficient and in line with the planning process.



Follow us on Twitter: @Equinor_UK
#SEPandDEP